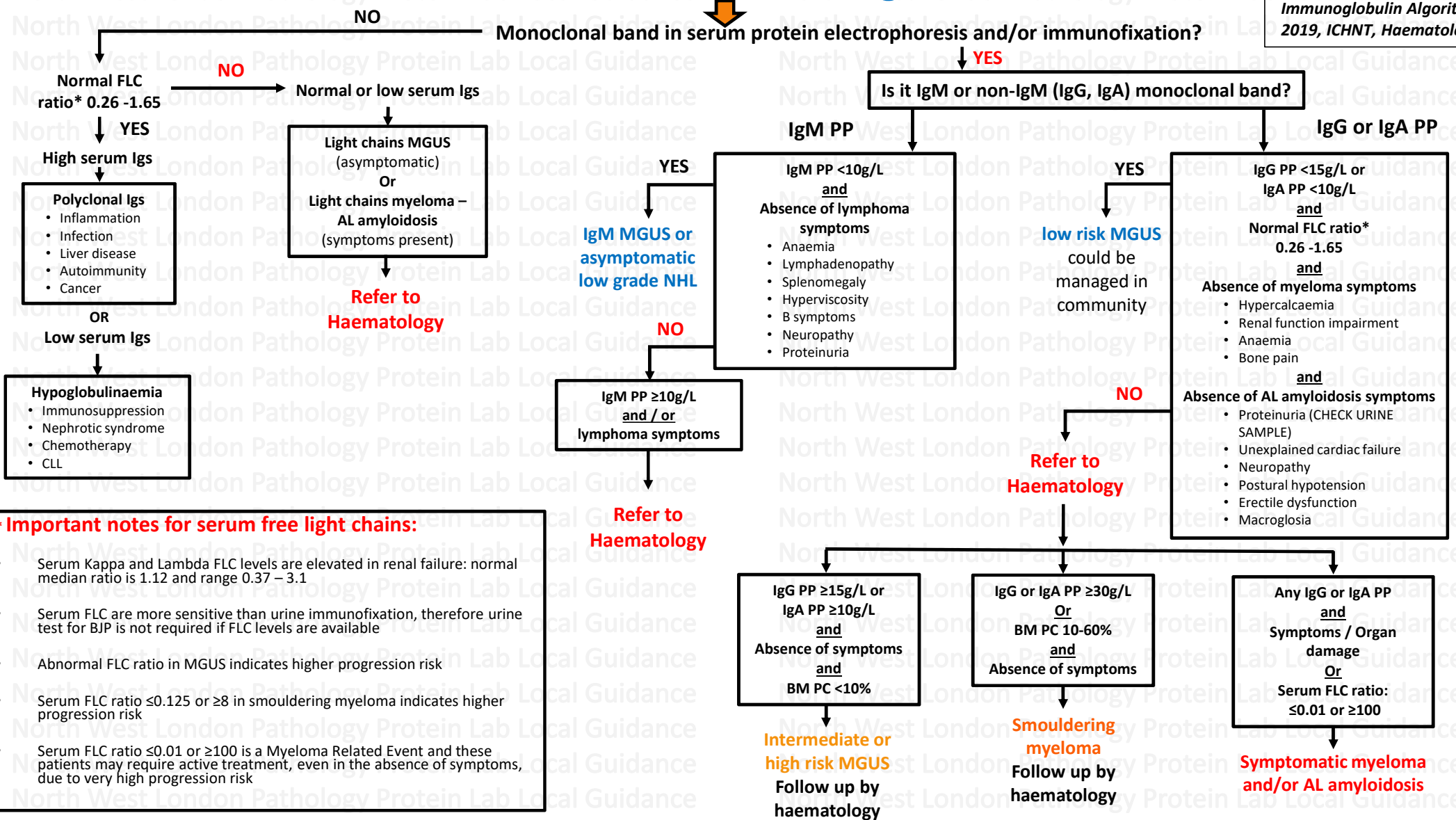


Abnormal Serum Immunoglobulins?

Abnormal Serum Immunoglobulin Algorithm 2019, ICHNT, Haematology



*** Important notes for serum free light chains:**

- Serum Kappa and Lambda FLC levels are elevated in renal failure: normal median ratio is 1.12 and range 0.37 – 3.1
- Serum FLC are more sensitive than urine immunofixation, therefore urine test for BJP is not required if FLC levels are available
- Abnormal FLC ratio in MGUS indicates higher progression risk
- Serum FLC ratio ≤0.125 or ≥8 in smouldering myeloma indicates higher progression risk
- Serum FLC ratio ≤0.01 or ≥100 is a Myeloma Related Event and these patients may require active treatment, even in the absence of symptoms, due to very high progression risk